

## Install a plotter on a Mac

---

1. Download the driver for the plotter. You can download it from the Intranet Downloads/Informatik/Treiber/MAC/Plottertreiber/HP Plotter..., or from one of the following links.

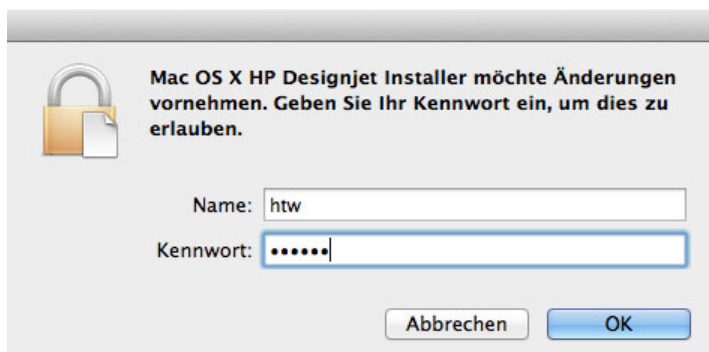
### Plotter building A:

<https://support.hp.com/ch-de/drivers/selfservice/hp-designjet-t930-printer-series/8255326>

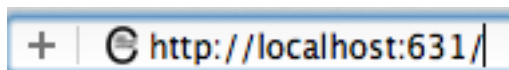
### Plotter building C:

<https://support.hp.com/ch-de/drivers/selfservice/hp-designjet-t920-printer-series/5365093>

2. Install the driver with the standard settings. After the installation close the HP assistant. During the installation you have to enter your username and password of your Mac.



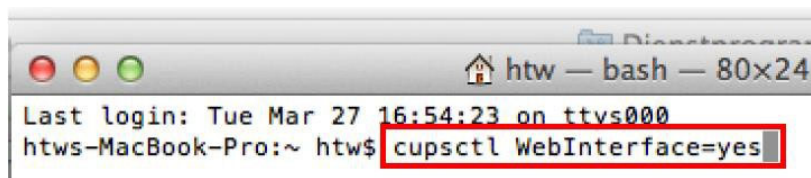
3. Open an Internet browser.
4. Connect with the following URL: <http://localhost:631>



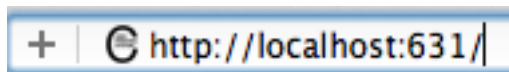
5. If following message is shown do the steps 6 – 9. Alternatively go on with step 10.



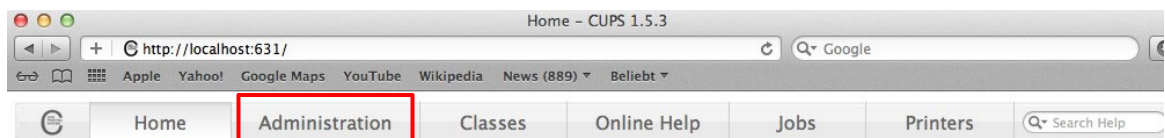
6. Search for the Terminal with the magnifier top right by the clock  
7. Enter the following command:



8. Open an Internet browser.  
9. Connect with the following URL: <http://localhost:631>



10. Click on "Administration".



## CUPS 1.5.3

CUPS is the standards-based, open source printing system developed by Apple Inc. for Mac OS® X and other UNIX®-like operating systems.



### CUPS for Users

[Overview of CUPS](#)  
[Command-Line Printing and](#)

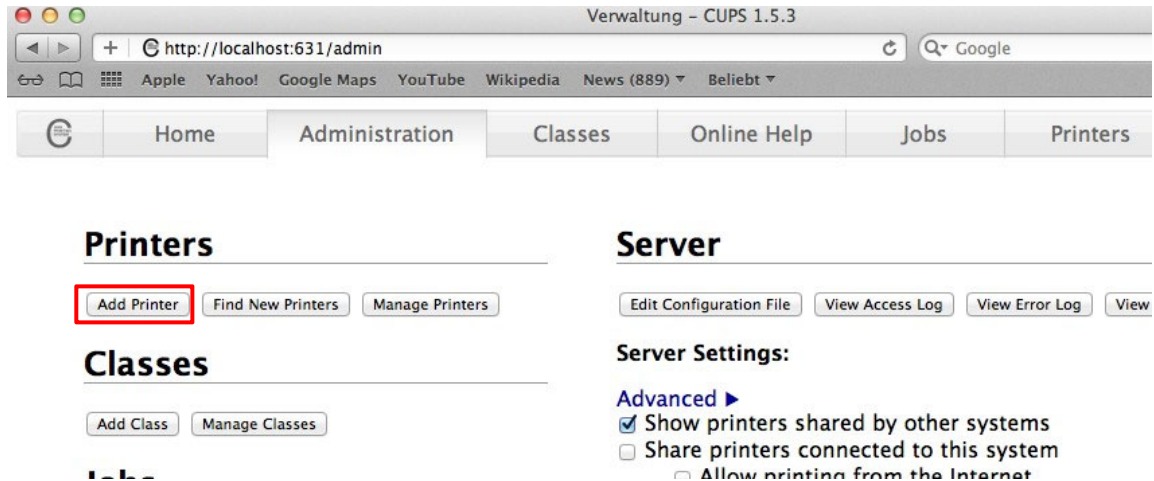
### CUPS for Administrators

[Adding Printers and Classes](#)

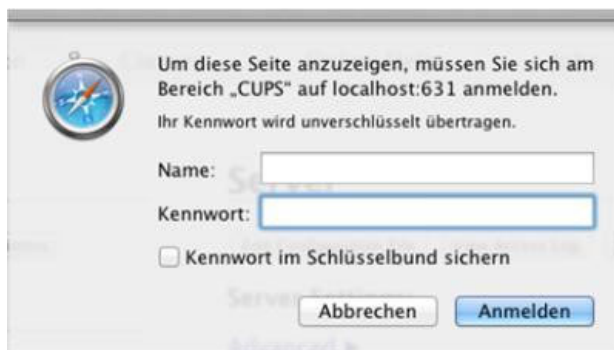
### CUPS for Developers

[Introduction to CUPS Programming](#)  
[CUPS API](#)

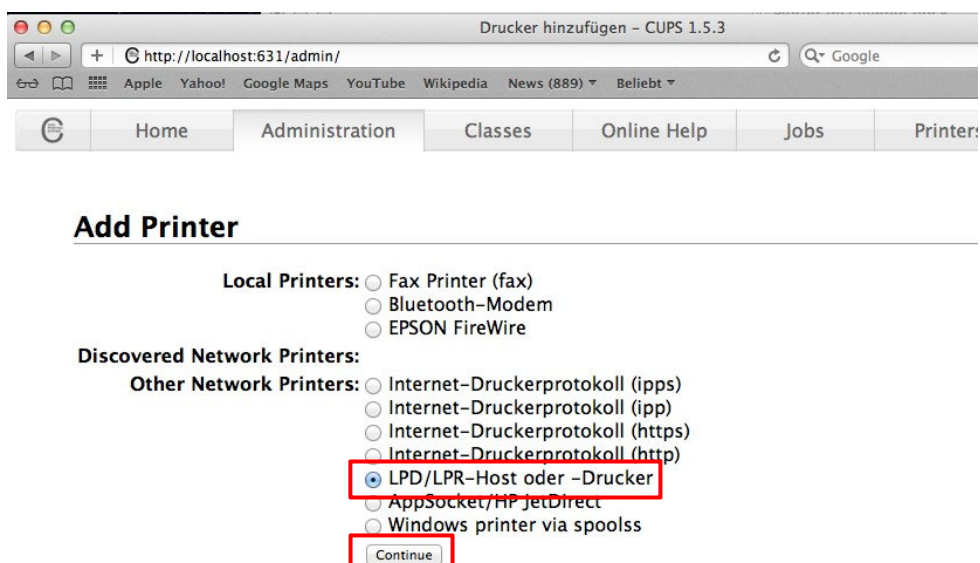
11. Click on "Add Printer".



12. Enter your name and password of your Mac.



13. Choose "LPD/LPR-Host or - Printer" in the "Other Network Printers" list and click on "Continue".



14. Fill in the following line under "Connection" and click on "Continue":

For the plotter HP Designjet T920ps (Building C):

smb://[username]:[password]@printserver.htwchur.ch/C0-04-pl-c-1

For the plotter HP Designjet T920ps Plus (Building C):

smb://[username]:[password]@printserver.htwchur.ch/C0-04-pl-c-2

For the plotter HP Designjet T930 (Building A):

smb://[username]:[password]@printserver.htwchur.ch/A3-04-pl-c-1



## Add Printer

Connection

Examples:

http://hostname:631/ipp/  
http://hostname:631/ipp/port1

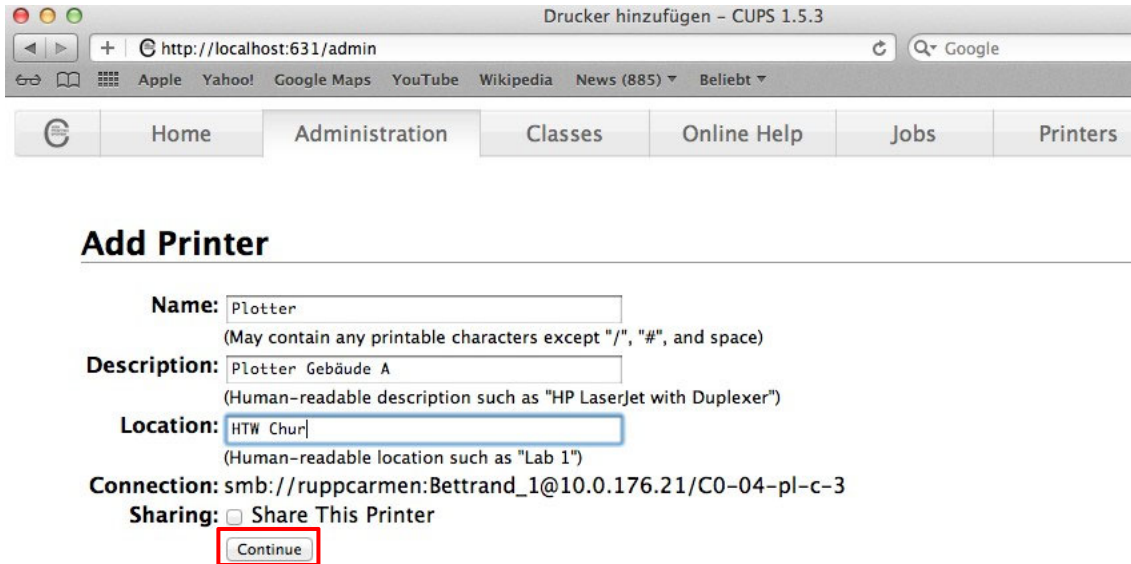
ipp://hostname/ipp/  
ipp://hostname/ipp/port1

lpd://hostname/queue

socket://hostname  
socket://hostname:9100

See "Network Printers" for the correct URI to use with your printer.

15. This information are free selectable. The description will be shown on the printer selection. Click on "Continue".



Drucker hinzufügen - CUPS 1.5.3

http://localhost:631/admin

Home Administration Classes Online Help Jobs Printers

### Add Printer

**Name:** Plotter  
 (May contain any printable characters except "/", "#", and space)

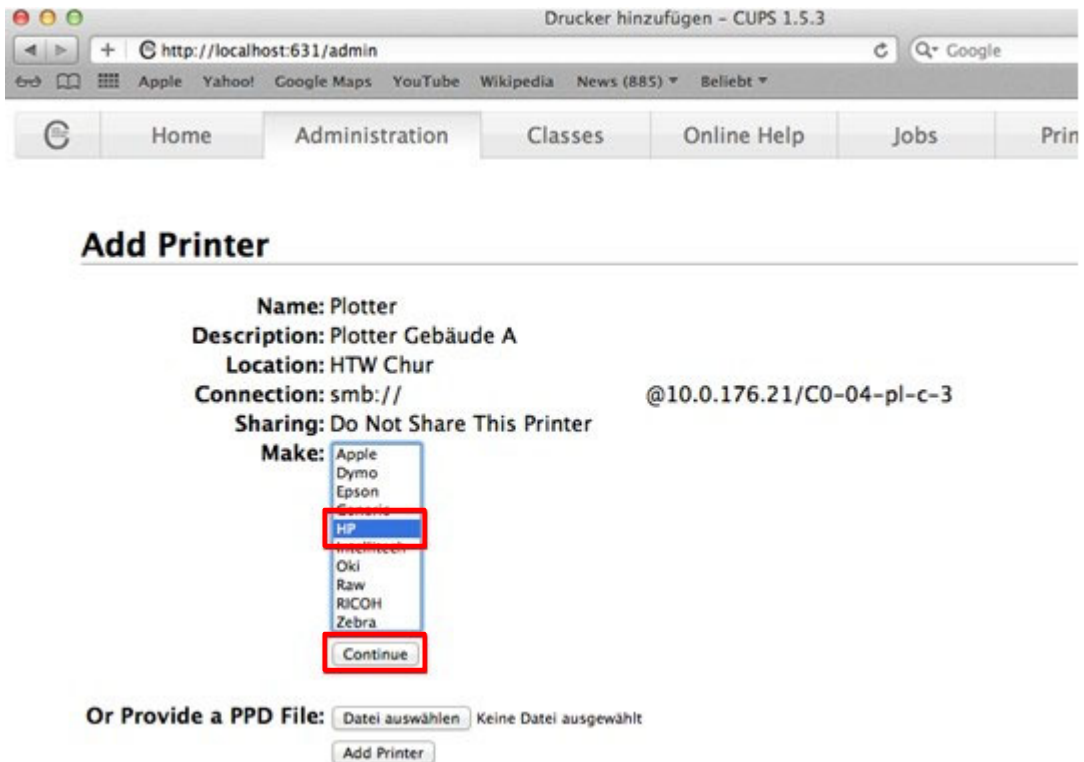
**Description:** Plotter Gebäude A  
 (Human-readable description such as "HP LaserJet with Duplexer")

**Location:** HTW Chur  
 (Human-readable location such as "Lab 1")

**Connection:** smb://ruppcarmen:Bettrand\_1@10.0.176.21/C0-04-pl-c-3

**Sharing:**  Share This Printer

16. Choose the type of the plotter, which you want to install (HP) and confirm with "Continue".



Drucker hinzufügen - CUPS 1.5.3

http://localhost:631/admin

Home Administration Classes Online Help Jobs Printers

### Add Printer

**Name:** Plotter

**Description:** Plotter Gebäude A

**Location:** HTW Chur

**Connection:** smb://ruppcarmen:Bettrand\_1@10.0.176.21/C0-04-pl-c-3

**Sharing:** Do Not Share This Printer

**Make:**

- Apple
- Dymo
- Epson
- HP**
- HP-Indirect
- Okidata
- Oki
- Raw
- RICOH
- Zebra

**Or Provide a PPD File:**  Keine Datei ausgewählt



17. Choose the model of the plotter and click on “Add Printer”.

For the plotter HP Designjet T920ps (Building C):  
HP Designjet T920ps

For the plotter HP Designjet T920ps Plus (Building C):  
HP Designjet T920ps

For the plotter HP Designjet T930 (Building A):  
HP Designjet T930

## Add Printer

**Name:** PlotterA  
**Description:** PlotterA  
**Location:** HTW Chur  
**Connection:** smb://ruppcarmen:Bettrand86@printserver.htwchur.ch/A3-04-pl-c-1  
**Sharing:** Do Not Share This Printer  
**Make:** HP   
**Model:**

HP Designjet T770ps 44in (en, en, de, es, fr, it, ja, ko, pl, pt, ru, zh_CN, zh_TW, nl)
HP Designjet T770ps 44in (en, en, de, es, fr, it, ja, ko, pl, pt, ru, zh_CN, zh_TW, nl)
HP Designjet T790ps 24in (en, en, de, es, fr, it, ja, ko, pl, pt, ru, zh_CN, zh_TW, nl)
HP Designjet T790ps 44in (en, en, de, es, fr, it, ja, ko, pl, pt, ru, zh_CN, zh_TW, nl)
HP Designjet T795ps 44in (en, en, de, es, fr, it, ja, ko, pl, pt, ru, zh_CN, zh_TW, nl)
HP Designjet T920 - PostScript (en, en, de, es, fr, it, ja, ko, pl, pt, ru, zh_CN, zh_TW, nl)
<b>HP DesignJet T930 - PostScript (en, en, de, es, fr, it, ja, ko, pl, pt, ru, zh_CN, zh_TW, nl)</b>
HP Designjet T1100ps 24in (en, en, de, es, fr, it, ja, ko, pl, pt, ru, zh_CN, zh_TW, nl)
HP Designjet T1100ps 44in (en, en, de, es, fr, it, ja, ko, pl, pt, ru, zh_CN, zh_TW, nl)
HP Designjet T1120ps 24in (en, en, de, es, fr, it, ja, ko, pl, pt, ru, zh_CN, zh_TW, nl)

**Or Provide a PPD File:**

18. The installation is finished. Now you can define the standard settings and click on “Set Default Options”.

## Set Default Options for PlotterA

**General** **Paper/Quality** **Finishing** **Color Options** **Troubleshooting** **Layout** **Banner** **Richtlinien**

**General**

**Mediengröße:** A0   
**Papierquelle:** Rolle